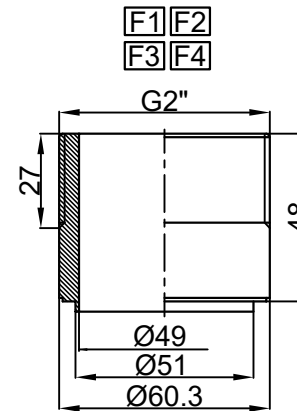
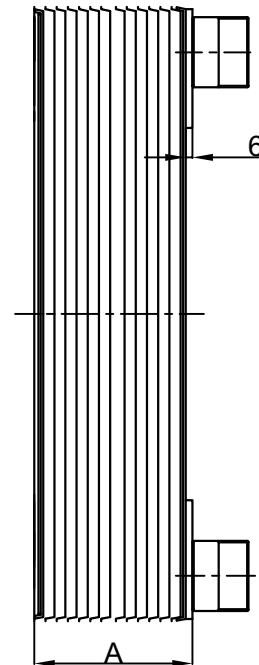
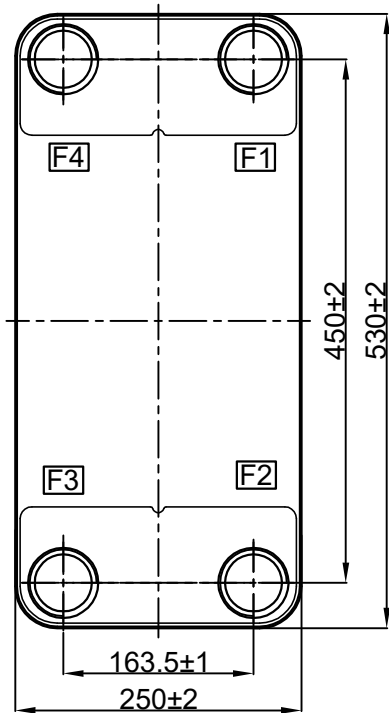


G2" Connection(L023)

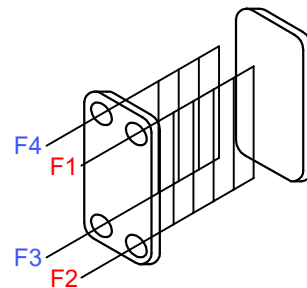
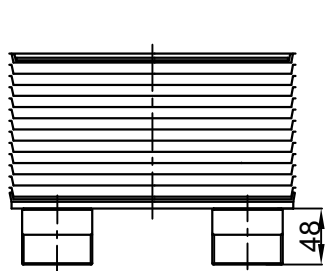


Design pressuer(MPa)	4.5
Testing pressuer(MPa)	6.7
Design Temperature(°C)	-196~+200°C
Label Code	



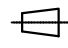


F3 F4 нагреваемая сторона: F3 вход, F4 выход

F1 F2 греющая сторона: F1 вход, F2 выход



Model	Height (mm)	Tube Length (mm)	Tube Diameter (mm)	Volume (L)	Weight (kg)	Heat transfer area (m ²)
FHT5433-084	150	358±8	F1F2side:18.08;F3F4side:17.83	62.10	17.76	
FHT5433-083	140	335±5	F1F2side:16.87;F3F4side:16.63	58.60	16.56	
FHT5433-082	130	312±5	F1F2side:15.67;F3F4side:15.42	55.10	15.36	
FHT5433-081	120	289±5	F1F2side:14.46;F3F4side:14.22	51.60	14.16	
FHT5433-080	110	267±5	F1F2side:13.26;F3F4side:13.01	48.10	12.96	
FHT5433-079	100	244±5	F1F2side:12.05;F3F4side:11.81	44.60	11.76	
FHT5433-078	90	221±3	F1F2side:10.85;F3F4side:10.60	41.10	10.56	
FHT5433-077	80	199±3	F1F2side:9.64;F3F4side:9.40	37.60	9.36	
FHT5433-076	70	176±3	F1F2side:8.44;F3F4side:8.19	34.10	8.16	
FHT5433-075	60	153±3	F1F2side:7.23;F3F4side:6.99	30.60	6.96	
FHT5433-074	50	131±3	F1F2side:6.03;F3F4side:5.78	27.10	5.76	
FHT5433-073	40	108±2	F1F2side:4.82;F3F4side:4.58	23.60	4.56	
FHT5433-072	30	85±2	F1F2side:3.62;F3F4side:3.37	20.10	3.36	
Drawing No.	Customer Part No.	Plate No.	A(mm)	Volume(L)	Weight (kg)	Heat transfer area(m ²)

Connection vertical degree: ±2°							Plate material: 316L	
							Connection material: 304	
							Cover plate material: 304	
							SNB120G-N-4.5-H	
							F1F2F3F4(G2")	
Mark	No.	Change file No	sign	Date	View	Scale	Size	
Design		XUZH	Standard			1:7		
Check			Approved					
Review			Edition	A/0				
Process			Date	20220622	